

# DUO

## Installation

### 1 Tools & Parts Needed



### 2

Remove the cover of the Duo (VP-1480) with the V-T900 security driver or V-900-T Allen wrench.

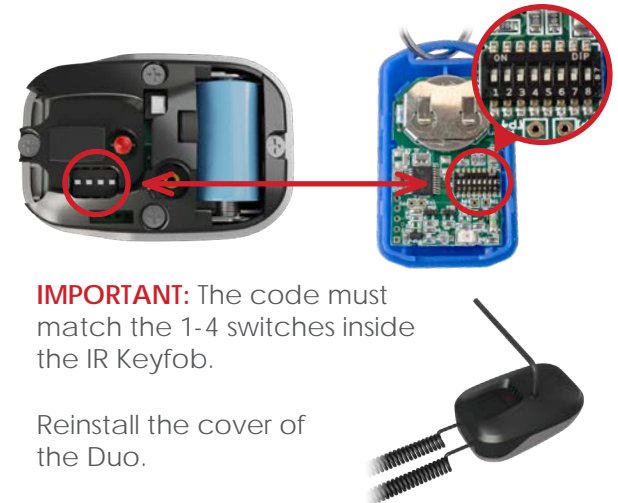


Plug the appropriate VPG accessory sensor(s) into the Duo.

**Note:** Duo is an alarm only product. No power source for devices.

### 3

Set the security code by changing the DIP switch inside the Duo.



### 4



### 5

Install the sensor(s) to the product(s).



### 6

