

# ENCORE

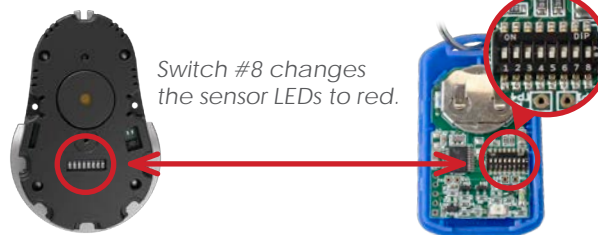
## Installation

### 1 Tools & Parts Needed



2 Remove the cover of the EnCore (VP-1397) with the V-T900 security driver or V-900-T Allen wrench.

Set the security code by changing the DIP switch inside the EnCore.



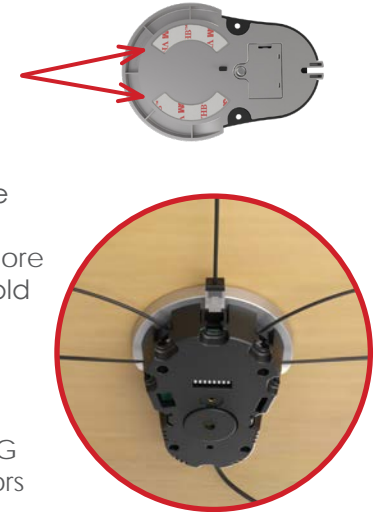
**IMPORTANT:** The code must match the switches inside the IR Keyfob.

3

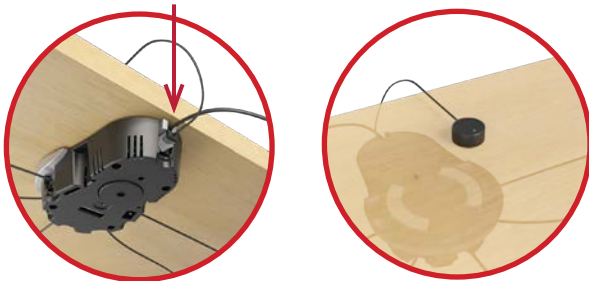
Remove the 3M adhesive liner.

Clean the fixture surface. Then, adhere the EnCore to the fixture. Hold in place for 30 seconds.

Plug the appropriate VPG accessory sensors into the EnCore.



4 Plug the IR Receiver cable into the back port of the EnCore.



5



6

Plug the V-37 power supply into the EnCore's power connector

