

CABINET LOCK

Installation | Device Wall

click or scan QR code
for installation video



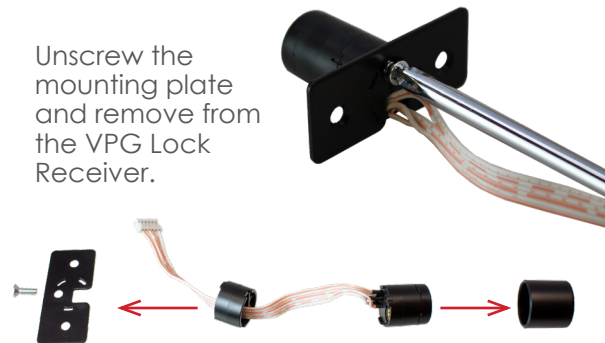
1 Tools & Parts Needed



***Not included in kit:** Drill
Phillips screwdriver
Flathead screwdriver
Double-sided adhesive

2 Use the existing system's key to unlock drawer and remove the lock and white ring cylinder.

Unscrew the mounting plate and remove from the VPG Lock Receiver.



Remove the extension cylinder and outer sleeve from the lock receiver.

3 **Note:** Depending on drawer thickness, this step may not be necessary.

Add the spacer between the mounting plate and lock receiver. Making sure the screw holes are aligned.



Place a small piece of double-sided adhesive on the spacer to temporarily hold in place.

Place the lock receiver in the existing cabinet lock hole.

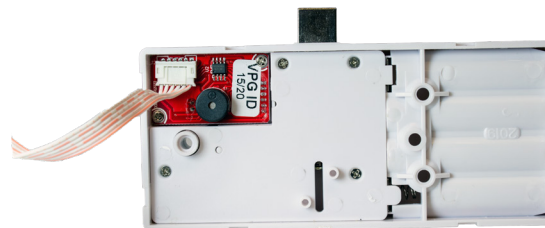
4 Using the mounting plate as a guide, pre-drill small pilot holes for the mounting screws.



Install the lock receiver with the included #4x5/8" screws.

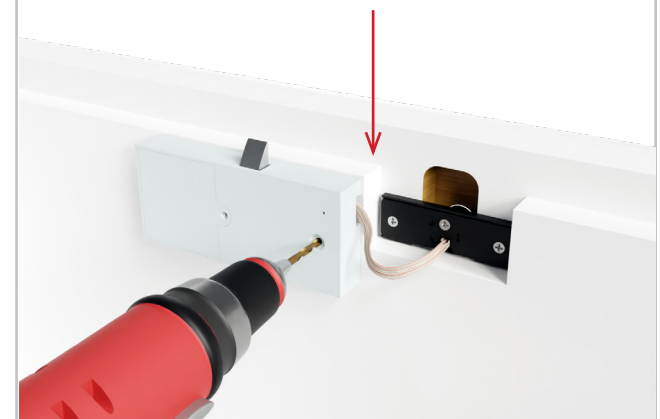
Important: Check thickness of wood, separate screw size may be needed.

5 Plug the female end of the ribbon cable from the lock receiver into the male end located on the lock bolt assembly.



Note: This can only be attached one way.

6 Align the lock bolt assembly with the outside of the 'notch' where the lock receiver is located.



Drill pilot holes for the mounting screws.

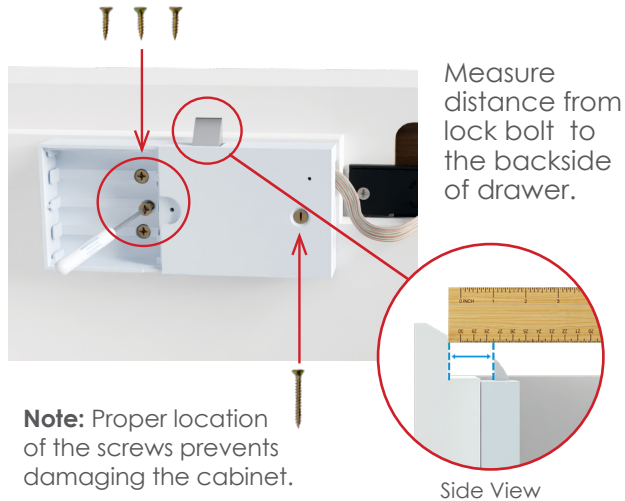
CABINET LOCK

Installation | Device Wall

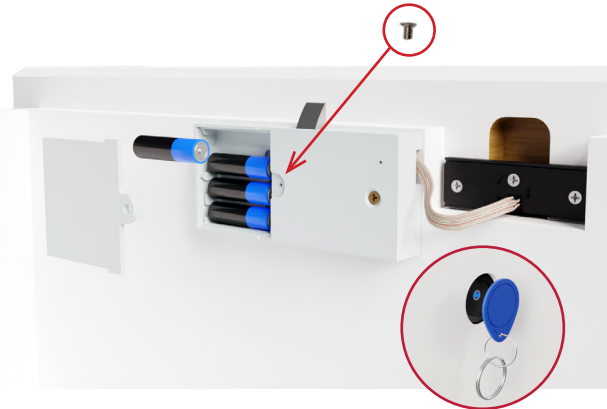
click or scan QR code
for installation video



- 7** Install the lock bolt using three #6x5/8" and one #8x1 3/4" flat head screws.

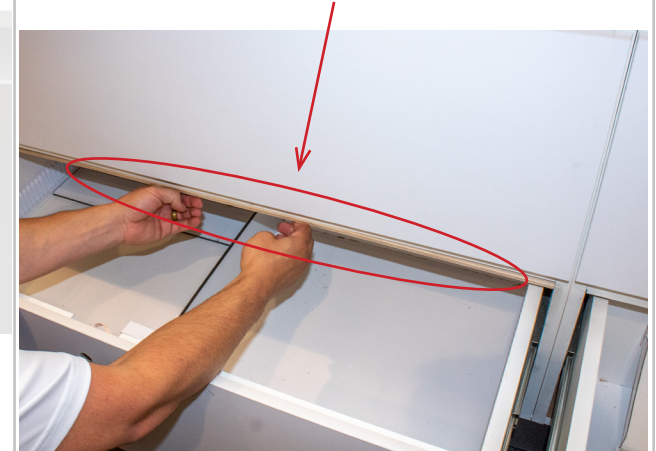


- 8** Insert the batteries into the Lock Bolt and use the designated manager key to test the lock.

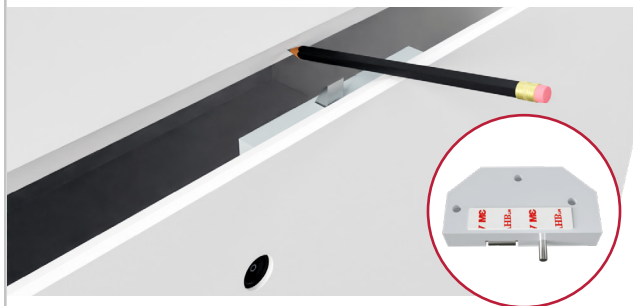


Close the battery compartment with the small flathead screw.

- 9** **IMPORTANT:** Some cabinet designs may include a thin furring strip on the underside of the cabinet. If one is present, installation steps 10 - 11 are not required.

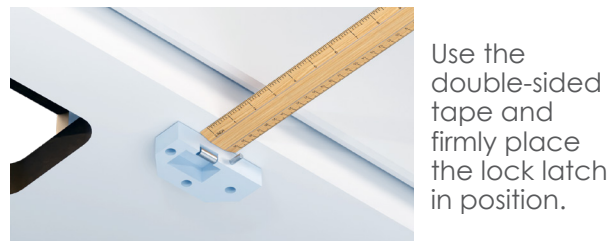


- 10** Slide the drawer to a nearly closed position and lightly mark the location where the lock bolt meets the underside of the cabinet. (This is for positioning the lock latch assembly.)



Place a small piece of double-sided tape on the lock latch assembly and verify positioning with the marks made on the fixture.

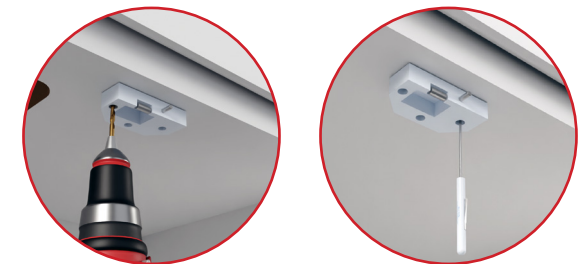
- 11** Using the measurement from step #8, offset the lock latch to the proper depth from the edge of the fixture.



Use the double-sided tape and firmly place the lock latch in position.

Prior to securing the lock latch in place, slide the drawer closed to make sure positioning is correct. Use the key you programmed to release the lock after verifying fit.

- 12** Drill pilot holes, using the lock latch as a template. Then, use the provided screws to attach lock latch.



Verify lock is working properly,

