



EVO STORE INSTALLER GUIDE



For ALL videos and guides, visit our directory:

www.vanguardprotexglobal.com/verizon-directory



Customer Care:
(877) 477-4874

TABLE OF CONTENTS



| | |
|--------------|--|
| 1 | Fixtures, Security Options, Install Videos |
| 2 | High Security |
| 3-4 | EVO Device Wall |
| 5 | EVO Hero Table |
| 6 | EVO Experience Wall |
| 7 | EVO Ecosystem Table, EVO Hero Table EVO TV Table |
| 8-11 | Installation Guides |
| 12 | Accessory Security |
| 13-14 | Adhesive Resistant Devices/Google Pixel 6 |
| 15 | Spare Parts |

EVO STORE - FIXTURES | SECURITY OPTIONS | INSTALL VIDEOS

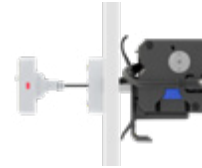
Install Videos

Fixture Type

Security Solutions



EVO DEVICE WALL



CR338-UTC
K-CR338UC-02W



CR338
K-CR338-02W



EVO HERO WALL



CR338
K-CR338-02W



EnCore
VP-1397W



EVO EXPERIENCE WALL



TITAN L2QD*
K-TTNL2QDA-02C

*Devices on EVO Experience Wall should already be installed with TITAN L2QD



EVO ECOSYSTEM TABLE
EVO TV TABLE
EVO HERO TABLE



CR338
K-CR338-02W



EnCore
VP-1397W

HIGH SECURITY

Merchandising Requirements | TITAN L2QD

TITAN L2QD Phone & Tablet High Security

IMPORTANT: Do **NOT** remove any phones and tablets pre-installed with VPG's Titan L2QD.

You can distinguish Invue security with VPG security from the octagonal pedestal and red LEDs that are only on VPG products. TITAN L2QDs will have 4 black metal brackets for high theft devices.



TITAN L2QD Vertical
K-TTNL2QD-02C



TITAN L2QD Angled
K-TTNL2QDA-02C



EVO DEVICE WALL

CR338-UTC | CR338



K-CR338-02W

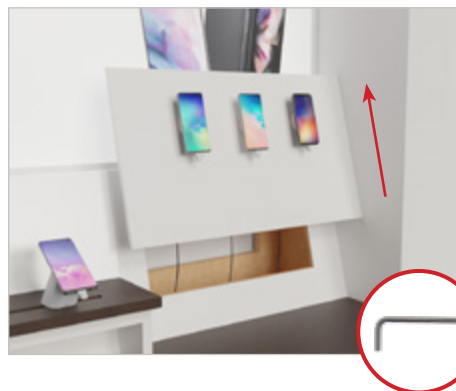


K-CR338UC-02W

How to Remove Panels

Slide the vertical panels up to remove them from the fixture.

Some panels may have security screws that will need to be removed with the appropriate Allen-wrench in order to remove the panel. The Allen wrench will be provided only in the first installation supply kit. Save the wrench for future store installs.



CR338 & CR338-UTC Phone & Tablet Security

EVO 1.0 Stores Only: CR338-UTC positions will go through the holes on the vertical panels.

CR338 positions will adhere over the slot holes on flat surfaces.



Ensure the tamper switch is depressed and the power cord is properly aligned prior to securing the CR338 pedestal in place.



Do NOT let the device go over the edge of the fixture.



EVO DEVICE WALL

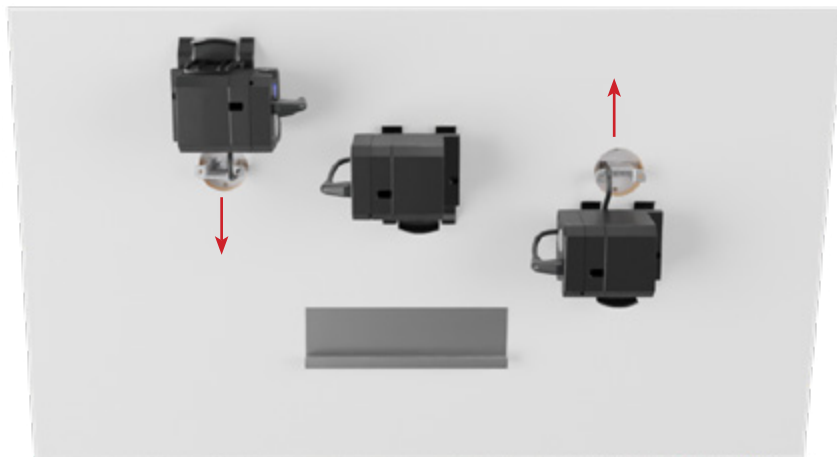
CR338-UTC | CR338



K-CR338-02W



K-CR338UC-02W



The outer left position will mount the cord reel with the power plug facing right and the outer right position will mount the cord reel with the power plug facing left. This ensures the panel will have enough clearance to reattach to the fixture.

Power Supply & Wire Management

The power supplies can be dropped down the bottom opening inside the fixture and plugged into the power outlet/strips located inside the bottom cabinets.



To access power supply on the 2nd tier shelf display, remove the back panel cover and wood shelf table top by lifting up.



Cabinet Doors

Unlock the cabinet doors using the appropriate key obtained from Verizon staff.





EVO HERO WALL

CR338 | EnCore



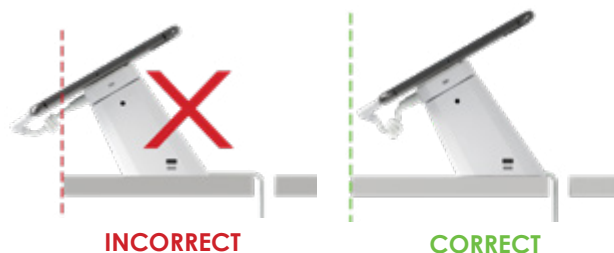
K-CR338-02W



VP-1397W

CR338 - Phone & Tablet Security

Do NOT let the device go over the edge of the fixture. Ensure the tamper switch is depressed and the power cord is fed out the back of the pedestal and into the slot.



CR338 positions will adhere to the table top surface.



Fixture Access

Unlock the door underneath the fixture top using the appropriate key obtained from Verizon staff.



EnCore - Accessory Security

The EnCore alarms are to be adhered on the inside wall of the fixture.



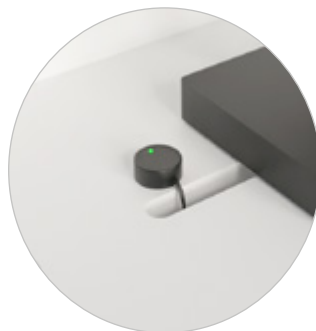
X-Sensor
VP-1350W



Type-C
VP-1439W



Micro USB
VP-1349W



IR Extender (KF-1102)

Accessory Security

The IR extender is used to extend the EnCore's IR reception.

Feed the cable up through the fixture slot and adhere the dome to the top shelf close to the edge of the slot.

To arm and disarm the EnCore alarm, point the IR keyfob at the dome.



EVO EXPERIENCE WALL

TITAN L2QD



Fixture Access

Pull latch to open underside panels and push latch to close. The 2nd tier half-circle display is removable.



Power Supply & Wire Management

The power supplies can be plugged into the power outlet/strips located inside the 1st tier display.

The 2nd tier display may need to be lifted to reach power supply.



Phone & Tablet High Security

Do NOT replace existing (Invue or VPG) security on this fixture.

Phones and tablets on the Experience Wall fixture should be pre-installed with VPG's Titan L2QD.

If Invue security is installed do NOT remove. It is the store associates' responsibility to re-order and install Titan L2QD security.



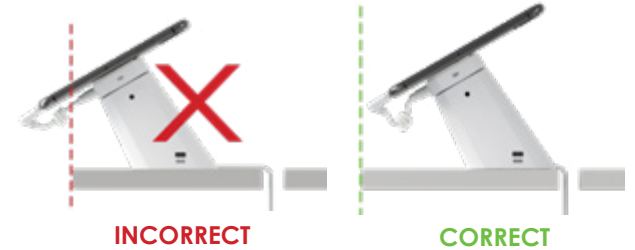
EVO

ECOSYSTEM TABLE HERO TABLE TV TABLE

CR338 | EnCore



CR338 - Phone & Tablet Security



Do NOT let the device go over the edge of the fixture. Ensure the tamper switch is depressed and the power cord is fed out the back of the pedestal and into the slot.

CR338 positions will adhere in front of the slot holes on the table top surface.

If necessary, rotate the removable topper so that the slot holes are further away from the counter edge.

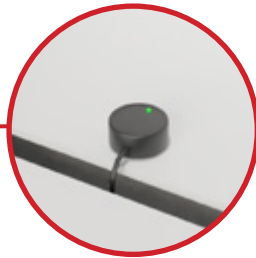


IR Extender (KF-1102) Accessory Security

The IR extender is used to extend the EnCore's IR reception.

Feed the cable up through the fixture slot and adhere the dome to the top shelf close to the edge of the slot.

To arm and disarm the EnCore alarm, point the IR keyfob at the dome.



EnCore - Accessory Security



The EnCore alarms are to be adhered inside the cabinet.



X-Sensor
VP-1350W



Type-C
VP-1439W



Micro USB
VP-1349W



Lift the overlay toppers in order to route the cables to the bottom cabinet.

CR338

Installation

click or scan QR code
for installation video

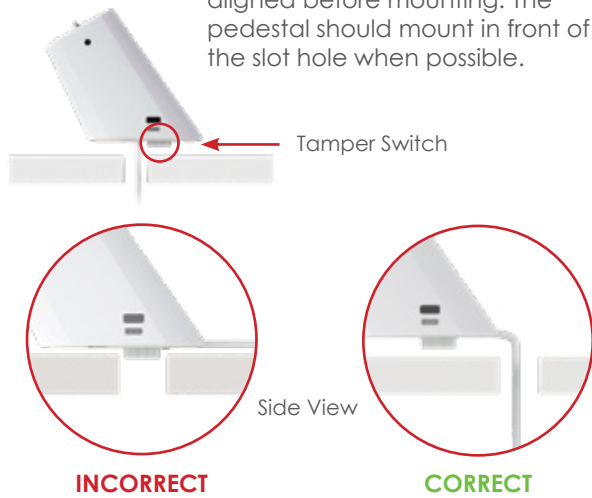


TOOLS & PARTS NEEDED



1

Make sure the tamper switch is fully depressed and properly aligned before mounting. The pedestal should mount in front of the slot hole when possible.



2

Clean fixture surface and wipe dry. Remove the 3M adhesive liner on the base of the pedestal and adhere the pedestal to the fixture.

Bottom View



3

If you are securing an adhesive resistant device, see page 13.

If you are securing a Google Pixel 6, see page 14.



Clean the back of the device with an alcohol pad and wipe dry.

Plug the power coupler into sensor and device prior to adhering.*

*If coupler is not plugged in, system will not alarm.

Remove adhesive liner on sensor and adhere to the lower center of the device, near the charging port as shown.

4

Attach the sensor to the pedestal by twisting the boot into the sensor.



5

Plug the power supply into the pedestal and into an AC outlet.



Arm the system by pressing the red "lock" button on the IR Keyfob (KF-1106). Point the keyfob near the black receiver above the LED.

System is on battery only if LED is flashing quickly. Must have power plugged in to arm the system.

CR338-UTC

Installation

click or scan QR code
for installation video



TOOLS & PARTS NEEDED



1

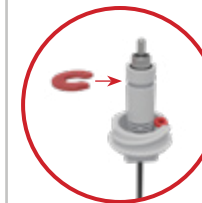
Thread the pedestal's power cable through the fixture. Place the pedestal onto the fixture.



2

First, thread the cord reel connector through the pedestal.

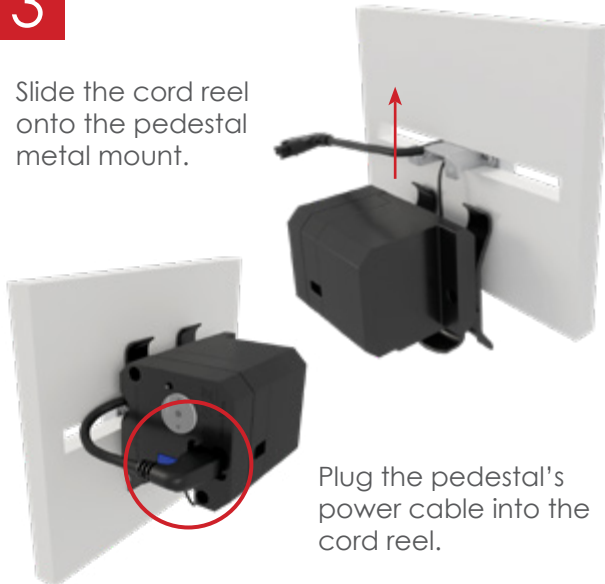
Insert the plastic boot through the cord reel connector.



Insert the red C-clip onto the connector.

3

Slide the cord reel onto the pedestal metal mount.



4

Clean the back of the device with an alcohol pad and wipe dry.



Plug the power coupler into sensor and device prior to adhering.*

**If coupler is not plugged in, system will not alarm.*

Remove adhesive liner on sensor and adhere to the center of the device.

Twist the boot into the sensor.



5

Arm the system by pressing the red "lock" button on the IR Keyfob (KF-1106). Point the key near the side of the pedestal.

Plug the power supply into the cord reel and into an AC outlet.



CR338 & CR338-UTC

Sensor & Pedestal Removal

IMPORTANT: Do NOT try to pull up on the CR338 base. It can damage the pedestal and/or the fixture. To remove a CR338 pedestal that's adhered to Verizon fixtures, follow the steps below.

[click or scan QR code for video](#)



| TOOLS & PARTS NEEDED | 1 | 2 | 3 |
|---|---|--|---|
| <p>KF-1106 VP-1446 VP-1477 or V-44</p> | <p>CR338 & CR338-UTC</p> <p>Disarm the system by pressing the green "unlock" button on the IR Keyfob (KF-1106).</p> | <p>CR338 & CR338-UTC</p> <p>Use the magnet tool (VP-1446) to twist and release the boot from the sensor.</p> | <p>CR338 & CR338-UTC</p> <p>To remove the sensor from the device, place VP-1477 removal tool over the sensor and gently twist to break the adhesive bond.</p> |
| <p>4 CR338 ONLY (STEPS 4-7)</p> <p>Place the VP-1477 removal tool over the pedestal with the indentation side facing up.</p> | <p>5</p> <p>Gently twist the removal tool to break the adhesive bond.</p> | <p>6</p> <p>Optionally, you can use the V-44 removal tool. Wrap the removal tool's cable underneath the pedestal.</p> | <p>7</p> <p>Alternate pulling the removal tool handles with each hand, in a sawing motion, until the pedestal is detached.</p> |

ENCORE

Installation

click or scan QR code
for installation video

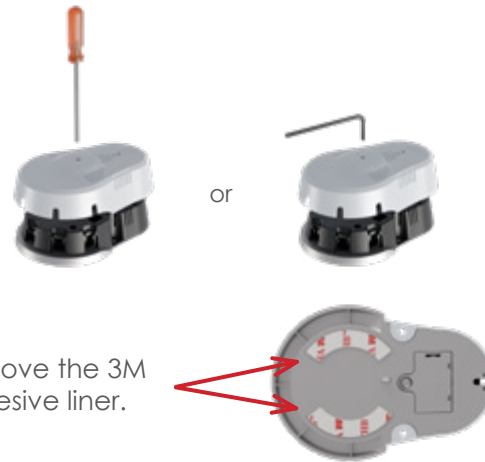


TOOLS & PARTS NEEDED



1

Remove the cover of the EnCore (VP-1397) with the V-T900 security driver or V-900-T Allen wrench.



2

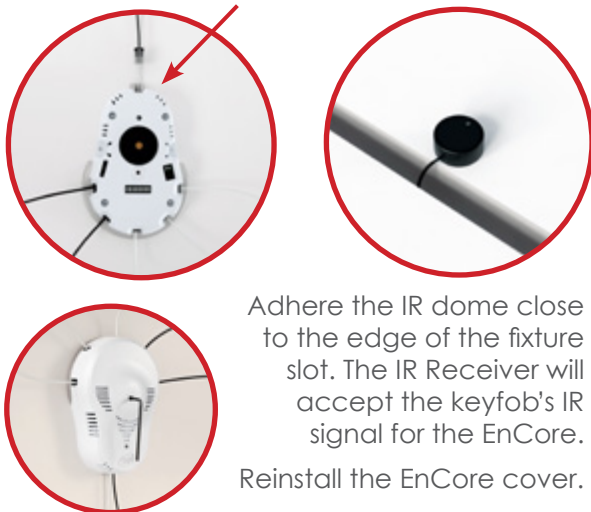
Clean the fixture surface. Then, adhere the EnCore to the fixture. Hold in place for 30 seconds.

Plug the appropriate VPG accessory sensors into the EnCore.



3

Plug the IR Receiver cable into the back port of the EnCore.



4



Thread the sensor cables through the fixture. Install the sensors to the products.

5

Plug the V-37 power supply into the EnCore's power connector



Accessory Security

X-Sensor | Type-C PAS | Micro USB PAS



SECURITY SENSORS AND THE ENCORE

Security sensors plug into the EnCore and route up through the fixture slots. **Do not plug Wearable Security Sensors into EnCore.**

Micro-USB, Type-C, and X-Sensors plug in or adhere to accessory products. Up to 5 sensors are used with the EnCore. Typically, you will not use all 5.

The LEDs on the security sensors and EnCore will light up red when the product is secure.

TYPE-C & MICRO USB POWER AND SECURITY SENSORS

Type-C & Micro USB PAS sensors are able to charge and secure devices at the same time. These sensors work with the EnCore, but remember, the **EnCore is not designed to charge phones.**

When applicable, use the retainer bracket that comes with the sensor.



X-SENSOR AND FLEX COVER

X-Sensors (VP-1350W) will be used on devices that do not need to be powered, such as headphones.

Adhere the X-Sensor to a smooth flat surface on the device without obstructing buttons or important features. Clean the area before adhering sensor.

If the device is round with no flat surfaces to adhere to, the Flex Cover (VP-1524C) may need to be adhered onto the X-Sensor. The Flex Cover is a flexible adhesive attachment with larger surface area for increased security.

ADHESIVE RESISTANT DEVICES

Merchandising Requirements | All Glass Back Phones

AD-218 - Clear Adhesive

Any device that has a glass back requires the AD-218 to make sure VPG sensors properly adhere to the product.

- 1) Clean the back of the device with an alcohol pad and wipe dry immediately.
- 2) Remove the adhesive liner from the AD-218.
- 3) Adhere the AD-218 to the back of the device.
- 4) **IMPORTANT:** Ensure the tamper switch on the CR338 sensor aligns with one of the 3 holes on the AD-218 adhesives.

Note: Heat (whether it be ambient or from the device) plays a major role in the effectiveness of adhesives. For optimal adhesive bond, phones should be displayed in a cool, dry area.



SECURING GOOGLE PIXEL 6 TO SENSOR

Merchandising Requirements | Google Pixel 6/Google Pixel 6 Plus

click or scan QR code
for installation video



TOOLS & PARTS NEEDED



AD-307
Novus 3



Adhesive
Template



AP-001-200
Alcohol Pads



Gloves



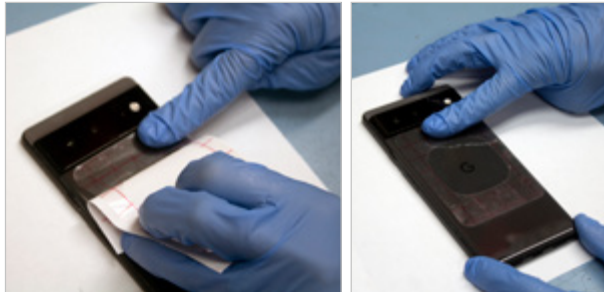
Safety
Glasses

*Not provided:
Paper Towel

Keep contents of kit in provided
plastic container for future use.

1

Put on safety glasses and gloves.
Pull a small part of the adhesive backing away from the template and align and center directly under the camera bar on the back of the phone.



Pull the remainder of the backing away from the template and smooth out any bubbles.

2

Apply the AD-307, Novus 3 to the center of the template.

With a paper towel, dab the Novus 3 to spread an even, thin layer on to the phone.



IMPORTANT:

Allow to set for at least 5 minutes for maximum effectiveness.

Note: You may need to add more Novus and dab to spread, in order to keep the area fully covered.

3

With the paper towel, apply FIRM pressure and use a side-to-side motion to rub the Novus 3 across the masked out area of the phone.



Note: The Novus will shift around, push it back onto the surface you're working in.

4

Wipe area clean with paper towel.

Wet paper towel and squeeze a small drop of water onto the treated surface.

If the surface is properly prepared, the water will spread out across the surface. If it beads up, repeat steps 3-4 and repeat the test.



5

Using an alcohol pad, clean the treated area thoroughly. Remove the adhesive template from the phone.



Remove adhesive liner from the sensor.





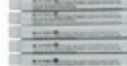




Attach the adhesive security to the treated area of the phone. Press firmly for 1 minute to ensure a proper set.

IMPORTANT: Allow adhesive to sit on the phone uninterrupted overnight with the device face up to create a strong bond.

SPARE PARTS

Maintenance

| | | | | | | | | | |
|---------------------------------------|---|---|---|---|---|--|--|--|--|
| CR338 Kit K-CR338-02W |  CR338 Pedestal VP-1751W |  CR338 Sensor VP-1707W |  Mounting Kit K-1106 |  Power Supply V-39 | Power Couplers |  Micro USB Coupler P21002 |  USB-C Coupler P21006 |  Lightning Coupler P21012 | |
| CR338-UTC Kit K-CR338UC-02W |  CR338-UTC Pedestal VP-1751W |  CR338 Sensor VP-1707W |  CR338-UTC Cord Reel VP-1750-Y |  CR338-UTC Boot VP-1540W |  Power Supply V-39 | Alarms |  EnCore VP-1397W |  Power Supply V-37 | |
| Accessory Security |  PAS Bracket VP-1431C-5 |  Clear PAS Bracket VP-1202C-5 |  Type-C PAS Sensor VP-1439W |  Micro USB PAS Sensor VP-1349WXL |  X-Sensor VP-1350WXL |  X-Sensor Cover VP-1524C | | | |
| Tools |  Sensor Removal Tool VP-1477 |  1/8" Allen Security Screwdriver T-99 |  1/8" Allen Security Screwdriver V-T900 |  Allen Security Wrench V-41 |  Magnet Tool VP-1446 | | | | |
| Adhesives |  CR338 Adhesive AD-239-5 |  CR338 Sensor Adhesive AD-238-8 |  EnCore Adhesive AD-139-20 |  X-Sensor Adhesive AD-131-50 |  Glass Adhesive AD-218-10 |  Primer Stick AD-105-5 |  Alcohol Pads AP-001-200 | | |
| Misc. |  IR Receiver KF-1102 |  IR Keyfob KF-1106 |  Velcro V-60V |  Supply Bag VPG Bank Bag | | | | | |
| Wearable Kit VZW-Wearable3 |  Wearable Stand VP-1625* |  Apple Watch Stand VP-1559 |  Slim Wearable Sensor VP-1626 |  Flex Sensor VP-1636 | *Cradle options for VP-1625 | Generic Watch Cradle VP-1657 Samsung Watch Cradle VP-1635 Galaxy Active VP-1664 | Garmin Watch Cradle VP-1656 Mont Blanc Watch Cradle VP-1689 Gizmo Watch Cradle VP-1694 | | |